



SAXON SHORE  
— ESTATE AGENTS —



## 8 Serpentine Road, Faversham, ME13 7XB Offers in excess of £300,000

Situated in the charming town of Faversham, this delightful mid-terrace house on Serpentine Road offers a perfect blend of modern living and comfort. This two-bedroom property is situated within a newly built estate, ensuring a fresh and contemporary atmosphere throughout.

Upon entering, you will find a well-appointed reception room that provides a welcoming space for relaxation and entertaining. The house boasts two spacious bedrooms, ideal for a small family or professionals seeking extra space. The bathroom is designed with modern fixtures, ensuring convenience and style.

One of the standout features of this property is its excellent condition, allowing you to move in with ease and enjoy your new home from day one. Additionally, the property includes parking for two cars, a significant advantage in today's busy world. For those with electric vehicles, the inclusion of an EV port adds a modern touch, catering to eco-conscious living.

This property truly must be seen to appreciate its charm and practicality. With its prime location in Faversham, you will benefit from the local amenities and the vibrant community that this historic town has to offer. Whether you are looking to buy or rent, this home presents an exceptional opportunity for comfortable living in a desirable area.

## Entrance Hall



## WC

3'4" x 5'6" (1.04 x 1.7)

## Lounge

9'10" x 15'5" (3 x 4.70)



## Kitchen/Dining Room

8'3" x 14'4" (2.52 x 4.38)

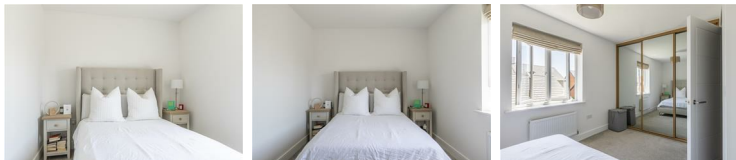


## Landing



## Bedroom 1

15'5" x 8'7" (4.7 x 2.63)



## Bathroom

8'3" x 7'0" (2.52 x 2.14)



## Bedroom 2

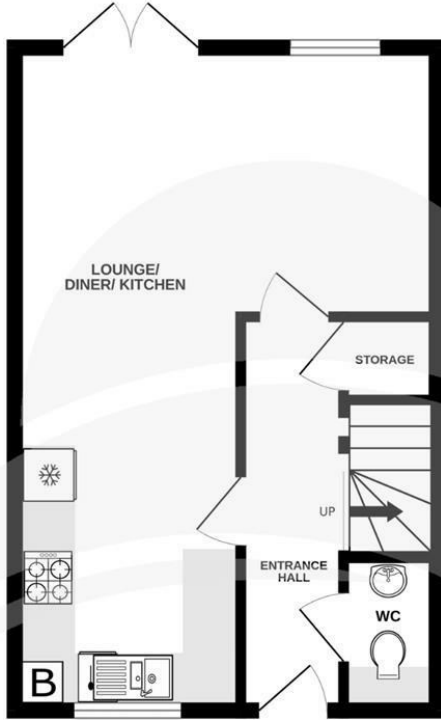
8'6" x 15'5" (2.61 x 4.7)



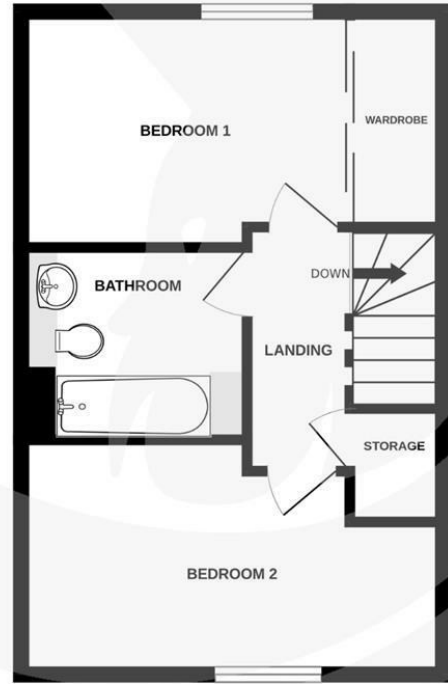
## Garden



GROUND FLOOR  
34.7 sq.m. (373 sq.ft.) approx.



1ST FLOOR  
34.4 sq.m. (371 sq.ft.) approx.



TOTAL FLOOR AREA : 69.1 sq.m. (744 sq.ft.) approx.

Whilst every attempt has been made to ensure the accuracy of the floorplan contained here, measurements of doors, windows, rooms and any other items are approximate and no responsibility is taken for any error, omission or mis-statement. This plan is for illustrative purposes only and should be used as such by any prospective purchaser. The services, systems and appliances shown have not been tested and no guarantee as to their operability or efficiency can be given.  
Made with Metropix ©2009.

